

# IDOL Trust 2012-1

## General Collateral Report

### Monthly Analysis Details:

<b>Date of Pool Cut:</b>	<b>31 Dec 2012</b>
<b>Number of Loans:</b>	<b>3,498</b>
<b>Total Current Balance:</b>	<b>\$641,390,429.55</b>
<b>Total Original Balance:</b>	<b>\$826,329,768.64</b>
<b>Total Current Variable Balance:</b>	<b>\$620,958,341.29</b>
<b>Total Current Fixed Balance:</b>	<b>\$20,432,088.26</b>
<b>Fixed Rate Balance as % of Total:</b>	<b>3.19%</b>
<b>Maximum Current Loan Balance:</b>	<b>\$697,162.34</b>
<b>Maximum Original Loan Balance:</b>	<b>\$1,367,294.00</b>
<b>Maximum Current LVR:</b>	<b>95.50%</b>
<b>Average Current Loan Balance:</b>	<b>\$183,359.19</b>
<b>Average Original Loan Balance:</b>	<b>\$236,229.21</b>
<b>Weighted Average Current LVR:</b>	<b>59.02%</b>

	<b>Full Doc</b>	<b>Lo Doc</b>	<b>Total</b>
% Insured Loans Covered by Genworth	30.05%	0.00%	30.05%
% Insured Loans Covered by PMI	1.94%	0.00%	1.94%
% Insured Loans Covered by QBE	68.01%	0.00%	68.01%
<b>Total</b>	<b>100.00%</b>	<b>0.00%</b>	<b>100.00%</b>

<b>Weighted Average Borrower Interest Rate:</b>	<b>5.74%</b>
<b>Weighted Average Variable Borrower Interest Rate:</b>	<b>5.71%</b>
<b>Weighted Average Fixed Borrower Interest Rate:</b>	<b>6.67%</b>

# IDOL Trust 2012-1

---

## General Collateral Report

	<b>Months</b>	<b>Years</b>
<b>Maximum Remaining Term:</b>	351.80	29.32
<b>Weighted Average Remaining Term:</b>	289.93	24.16
<b>Maximum Original Term:</b>	360.00	30.00
<b>Weighted Average Original Term:</b>	353.30	29.44
<b>Weighted Average Seasoning:</b>	63.45	5.29

**Investment Properties as % of Total:** 11.32%

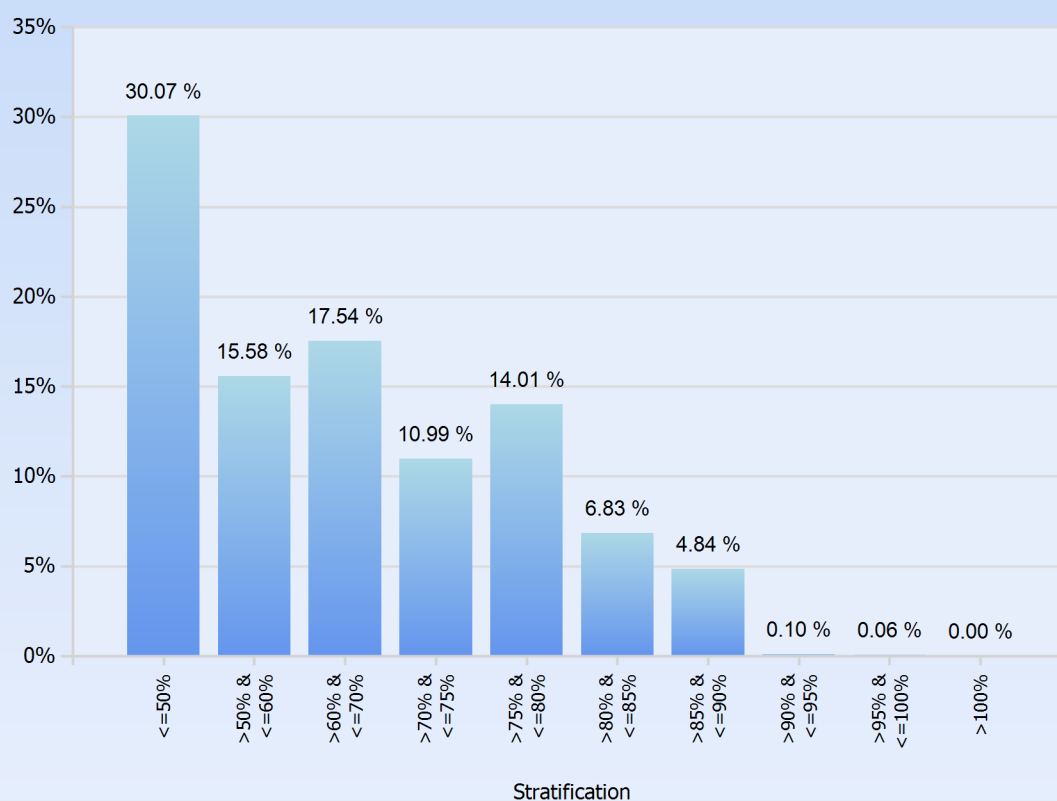
<b>Arrears Distribution:</b>	<b>Balance</b>
<b>&lt;= 30 days:</b>	\$639,961,411.59
<b>31 - 60 days:</b>	\$747,775.00
<b>61 - 90 days:</b>	\$391,090.01
<b>91+ days:</b>	\$290,152.95

# IDOL Trust 2012-1

## General Collateral Report

Current LVR	Current Balance	Current Balance %
<=50%	\$192,845,536.03	30.07%
>50% & <=60%	\$99,915,217.61	15.58%
>60% & <=70%	\$112,477,896.83	17.54%
>70% & <=75%	\$70,470,722.92	10.99%
>75% & <=80%	\$89,841,512.68	14.01%
>80% & <=85%	\$43,811,739.81	6.83%
>85% & <=90%	\$31,052,763.08	4.84%
>90% & <=95%	\$612,122.68	0.10%
>95% & <=100%	\$362,917.91	0.06%
>100%	\$0.00	0.00%
<b>Total</b>	<b>\$641,390,429.55</b>	<b>100.00%</b>

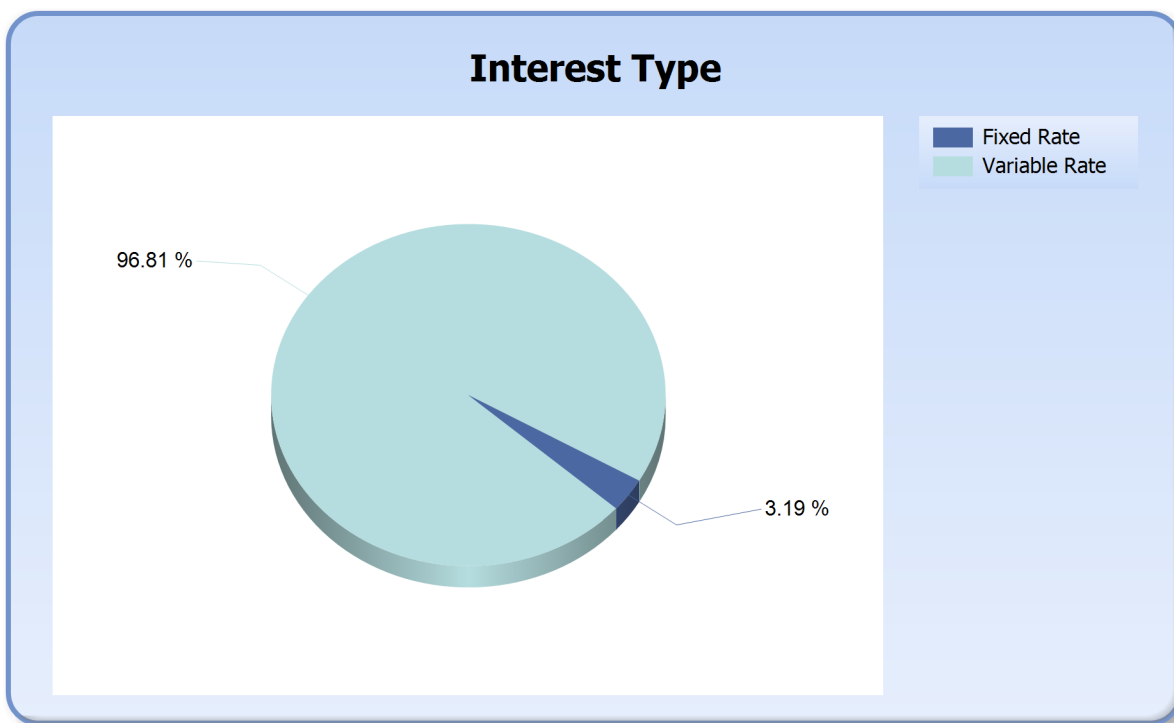
### Current LVR



# IDOL Trust 2012-1

## General Collateral Report

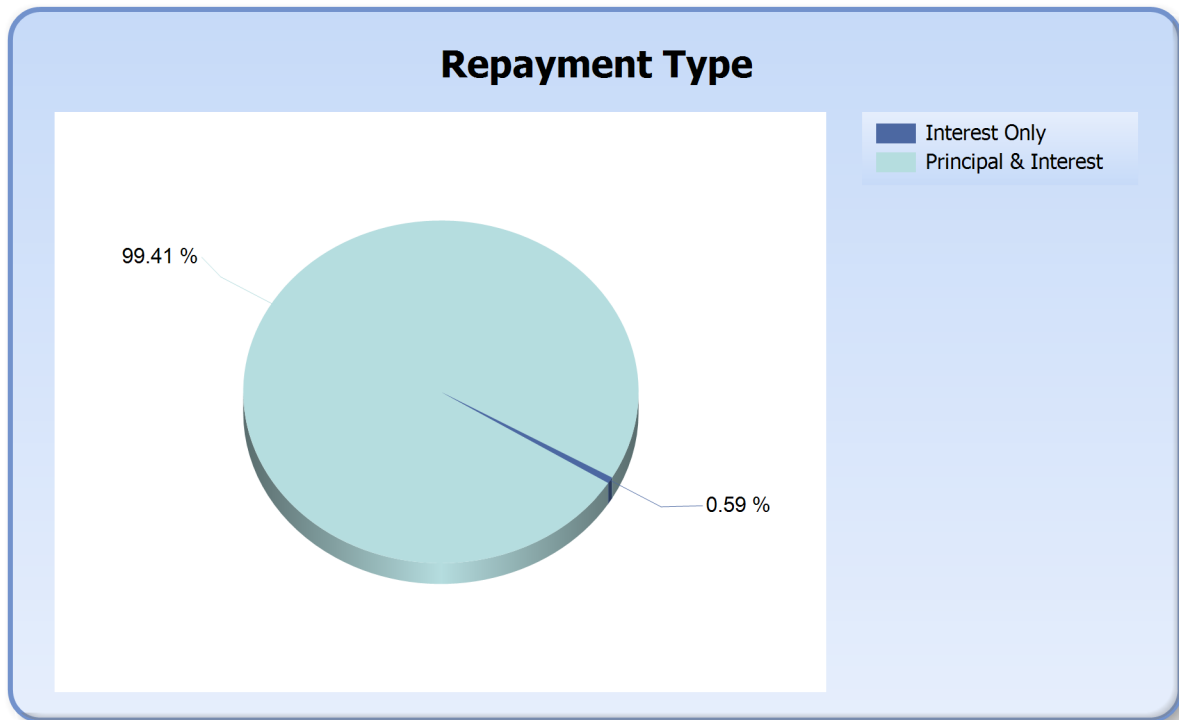
Interest Type	Current Balance	Current Balance %
Fixed Rate	\$20,432,088.26	3.19%
Variable Rate	\$620,958,341.29	96.81%
<b>Total</b>	<b>\$641,390,429.55</b>	<b>100.00%</b>



# IDOL Trust 2012-1

## General Collateral Report

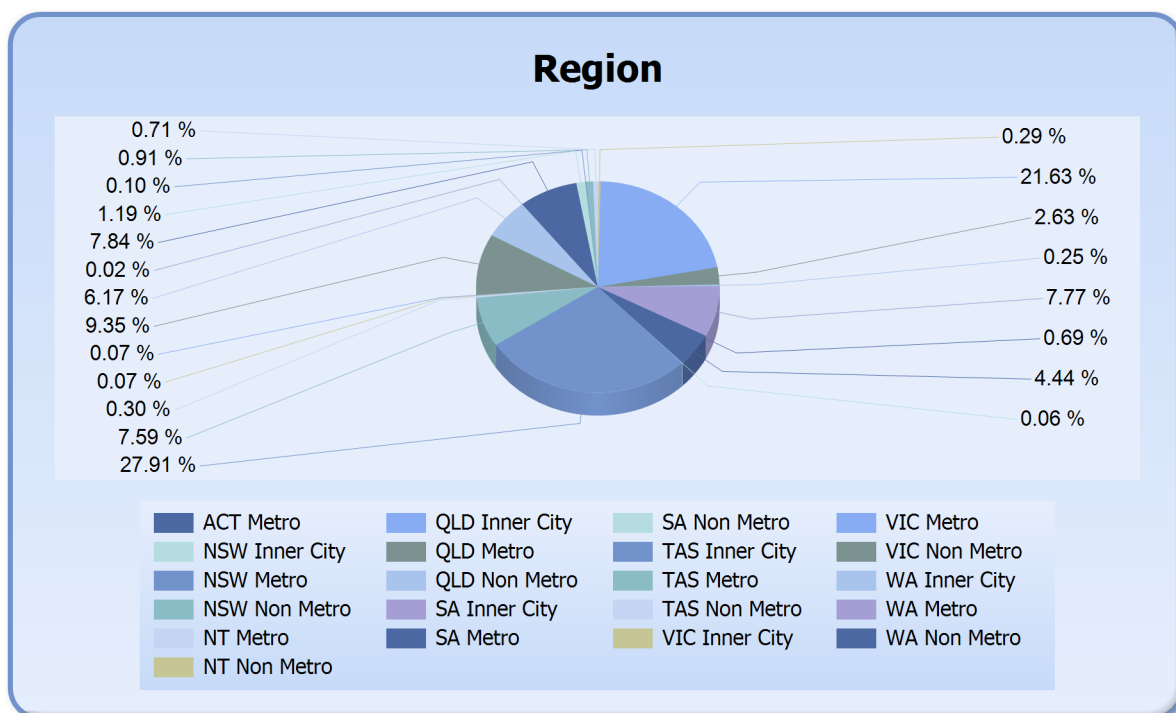
Repayment Type	Current Balance	Current Balance %
Interest Only	\$3,781,048.47	0.59%
Principal & Interest	\$637,609,381.08	99.41%
<b>Total</b>	<b>\$641,390,429.55</b>	<b>100.00%</b>



# IDOL Trust 2012-1

## General Collateral Report

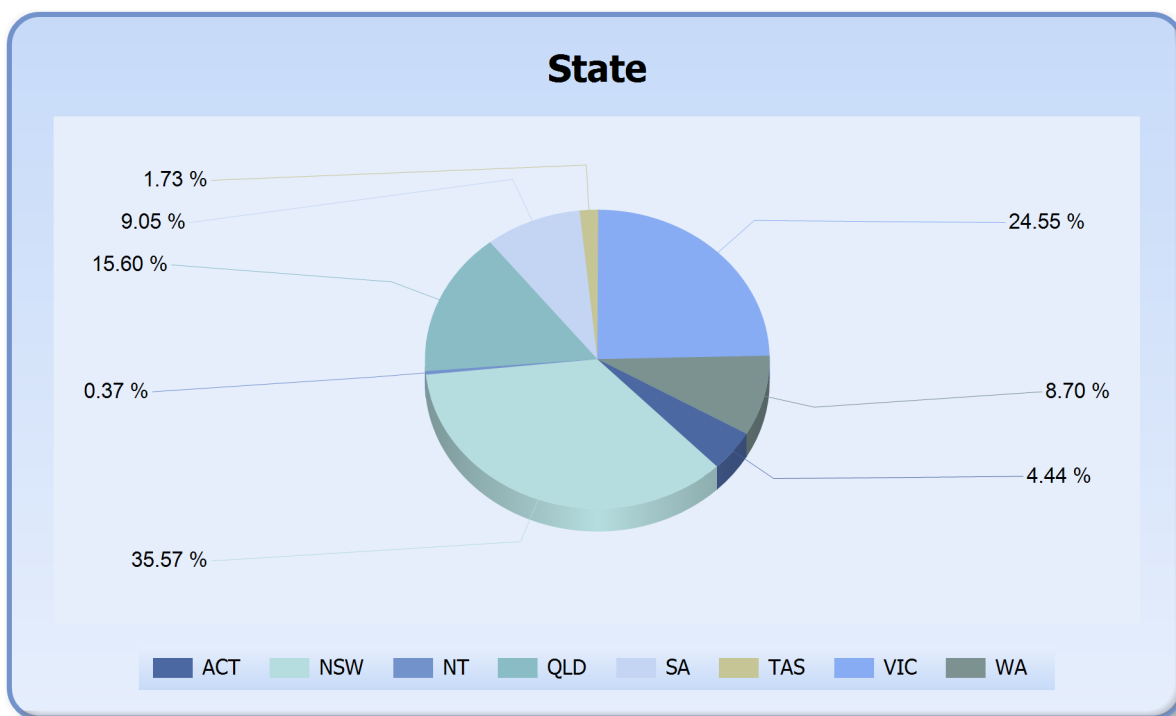
Region	Current Balance	Current Balance %
ACT Metro	\$28,478,599.09	4.44%
NSW Inner City	\$415,949.25	0.06%
NSW Metro	\$179,040,091.62	27.91%
NSW Non Metro	\$48,692,325.34	7.59%
NT Metro	\$1,896,552.10	0.30%
NT Non Metro	\$456,958.10	0.07%
QLD Inner City	\$459,095.80	0.07%
QLD Metro	\$59,969,430.74	9.35%
QLD Non Metro	\$39,599,541.90	6.17%
SA Inner City	\$97,982.35	0.02%
SA Metro	\$50,313,403.93	7.84%
SA Non Metro	\$7,632,337.27	1.19%
TAS Inner City	\$666,443.43	0.10%
TAS Metro	\$5,814,511.98	0.91%
TAS Non Metro	\$4,584,929.70	0.71%
VIC Inner City	\$1,861,629.69	0.29%
VIC Metro	\$138,736,334.03	21.63%
VIC Non Metro	\$16,852,508.55	2.63%
WA Inner City	\$1,577,401.84	0.25%
WA Metro	\$49,850,248.62	7.77%
WA Non Metro	\$4,394,154.22	0.69%
<b>Total</b>	<b>\$641,390,429.55</b>	<b>100.00%</b>



# IDOL Trust 2012-1

## General Collateral Report

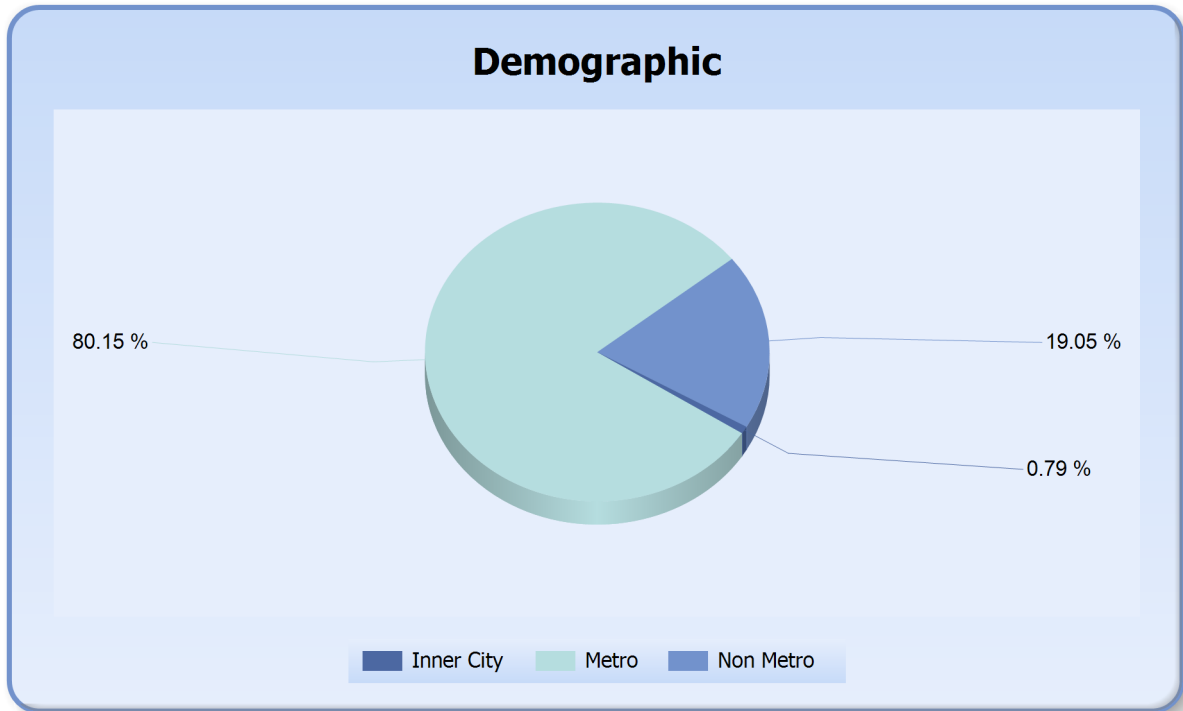
State	Current Balance	Current Balance %
ACT	\$28,478,599.09	4.44%
NSW	\$228,148,366.21	35.57%
NT	\$2,353,510.20	0.37%
QLD	\$100,028,068.44	15.60%
SA	\$58,043,723.55	9.05%
TAS	\$11,065,885.11	1.73%
VIC	\$157,450,472.27	24.55%
WA	\$55,821,804.68	8.70%
<b>Total</b>	<b>\$641,390,429.55</b>	<b>100.00%</b>



# IDOL Trust 2012-1

## General Collateral Report

Demographic	Current Balance	Current Balance %
Inner City	\$5,078,502.36	0.79%
Metro	\$514,099,172.11	80.15%
Non Metro	\$122,212,755.08	19.05%
<b>Total</b>	<b>\$641,390,429.55</b>	<b>100.00%</b>

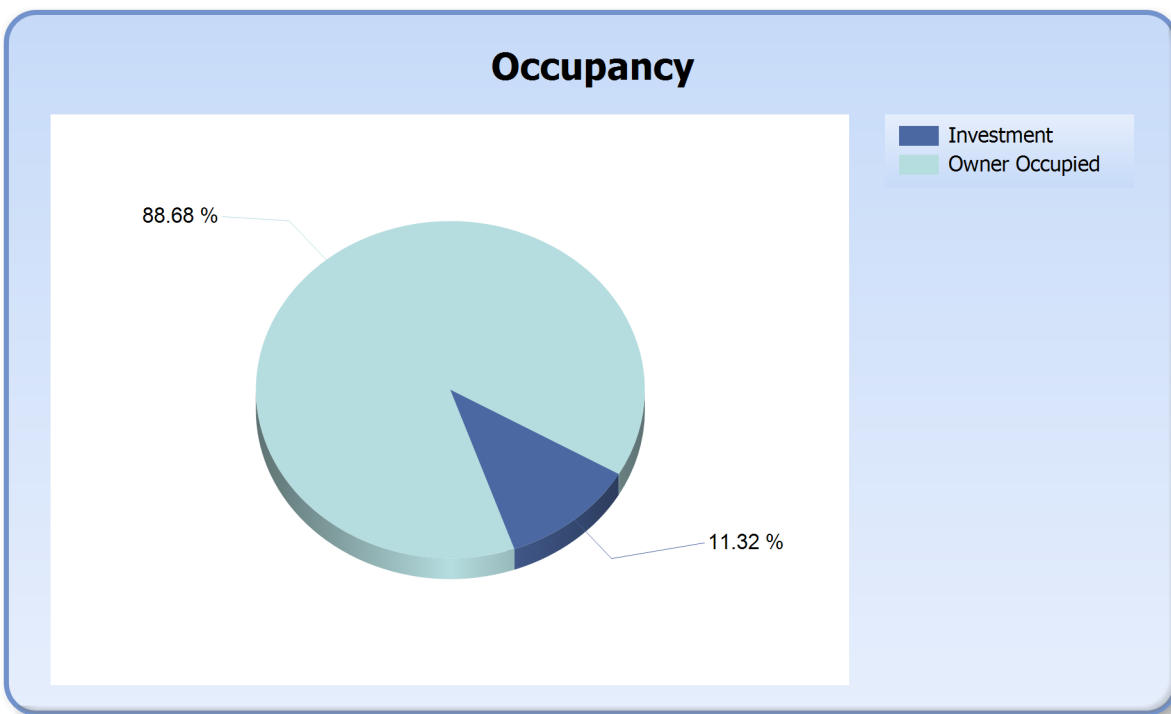




# IDOL Trust 2012-1

## General Collateral Report

Occupancy Type	Current Balance	Current Balance %
Investment	\$72,588,924.19	11.32%
Owner Occupied	\$568,801,505.36	88.68%
<b>Total</b>	<b>\$641,390,429.55</b>	<b>100.00%</b>



# IDOL Trust 2012-1

## General Collateral Report

Document Type	Current Balance	Current Balance %
Full Doc	\$641,390,429.55	100%
<b>Total</b>	<b>\$641,390,429.55</b>	<b>100%</b>

