

# IDOL Trust 2011-1

## General Collateral Report

### Monthly Analysis Details:

<b>Date of Pool Cut:</b>	<b>31 Aug 2012</b>
<b>Number of Loans:</b>	<b>2,897</b>
<b>Total Current Balance:</b>	<b>\$573,714,115.40</b>
<b>Total Original Balance:</b>	<b>\$703,852,849.49</b>
<b>Total Current Variable Balance:</b>	<b>\$560,862,660.44</b>
<b>Total Current Fixed Balance:</b>	<b>\$12,851,454.96</b>
<b>Fixed Rate Balance as % of Total:</b>	<b>2.24%</b>
<b>Maximum Current Loan Balance:</b>	<b>\$715,579.94</b>
<b>Maximum Original Loan Balance:</b>	<b>\$850,000.00</b>
<b>Maximum Current LVR:</b>	<b>95.20%</b>
<b>Average Current Loan Balance:</b>	<b>\$198,037.32</b>
<b>Average Original Loan Balance:</b>	<b>\$242,959.22</b>
<b>Weighted Average Current LVR:</b>	<b>63.51%</b>

	<b>Full Doc</b>	<b>Lo Doc</b>	<b>Total</b>
% Insured Loans Covered by Genworth	99.85%	0.00%	99.85%
% Insured Loans Covered by PMI	0.15%	0.00%	0.15%
<b>Total</b>	<b>100.00%</b>	<b>0.00%</b>	<b>100.00%</b>

<b>Weighted Average Borrower Interest Rate:</b>	<b>6.23%</b>
<b>Weighted Average Variable Borrower Interest Rate:</b>	<b>6.22%</b>
<b>Weighted Average Fixed Borrower Interest Rate:</b>	<b>6.56%</b>

# IDOL Trust 2011-1

---

## General Collateral Report

	<b>Months</b>	<b>Years</b>
<b>Maximum Remaining Term:</b>	358.10	29.84
<b>Weighted Average Remaining Term:</b>	293.71	24.48
<b>Maximum Original Term:</b>	360.00	30.00
<b>Weighted Average Original Term:</b>	355.04	29.59
<b>Weighted Average Seasoning:</b>	61.27	5.11

**Investment Properties as % of Total:** 14.49%

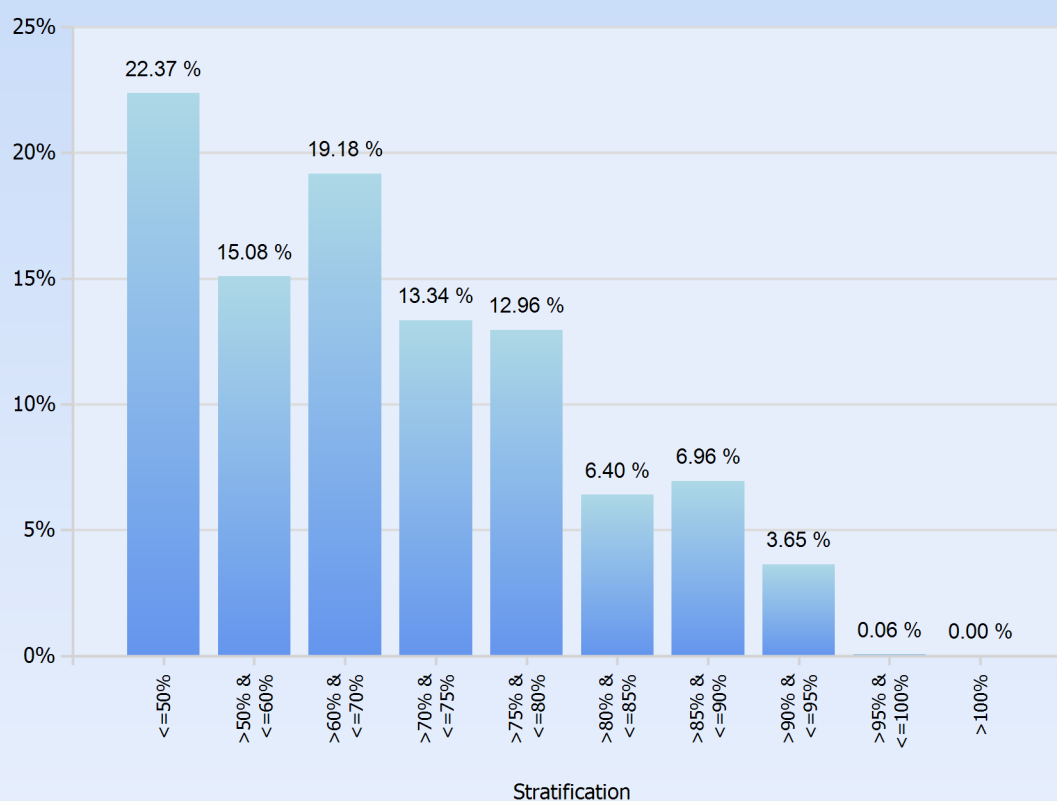
<b>Arrears Distribution:</b>	<b>Balance</b>
<= 30 days:	\$571,092,656.53
31 - 60 days:	\$1,580,231.94
61 - 90 days:	\$616,542.54
91+ days:	\$424,684.39

# IDOL Trust 2011-1

## General Collateral Report

Current LVR	Current Balance	Current Balance %
<=50%	\$128,343,733.30	22.37%
>50% & <=60%	\$86,544,165.04	15.08%
>60% & <=70%	\$110,032,713.81	19.18%
>70% & <=75%	\$76,545,897.74	13.34%
>75% & <=80%	\$74,343,036.18	12.96%
>80% & <=85%	\$36,721,898.66	6.40%
>85% & <=90%	\$39,914,457.58	6.96%
>90% & <=95%	\$20,918,816.63	3.65%
>95% & <=100%	\$349,396.46	0.06%
>100%	\$0.00	0.00%
<b>Total</b>	<b>\$573,714,115.40</b>	<b>100.00%</b>

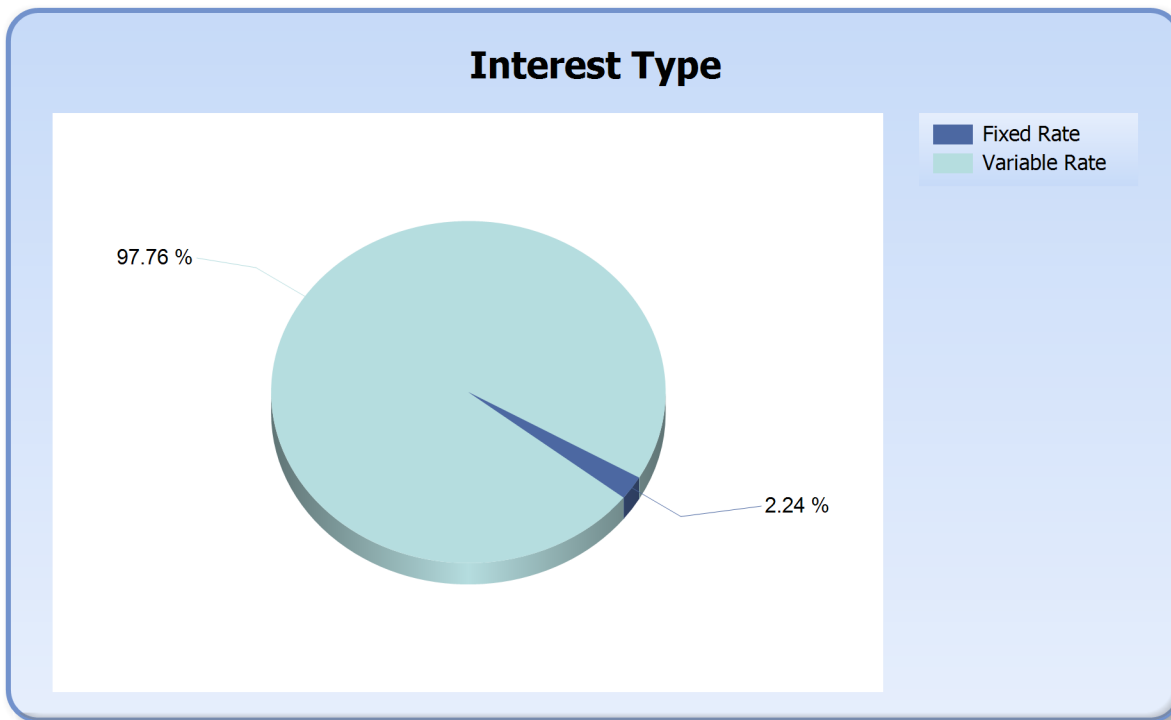
### Current LVR



# IDOL Trust 2011-1

## General Collateral Report

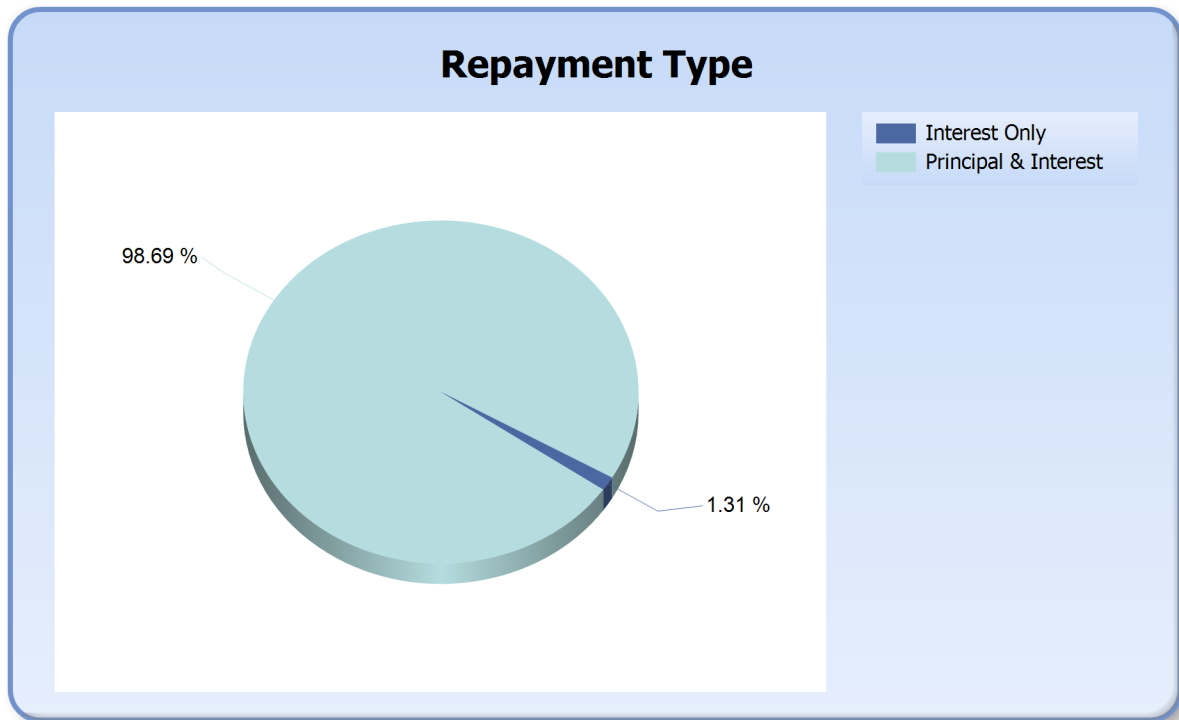
Interest Type	Current Balance	Current Balance %
Fixed Rate	\$12,851,454.96	2.24%
Variable Rate	\$560,862,660.44	97.76%
<b>Total</b>	<b>\$573,714,115.40</b>	<b>100.00%</b>



# IDOL Trust 2011-1

## General Collateral Report

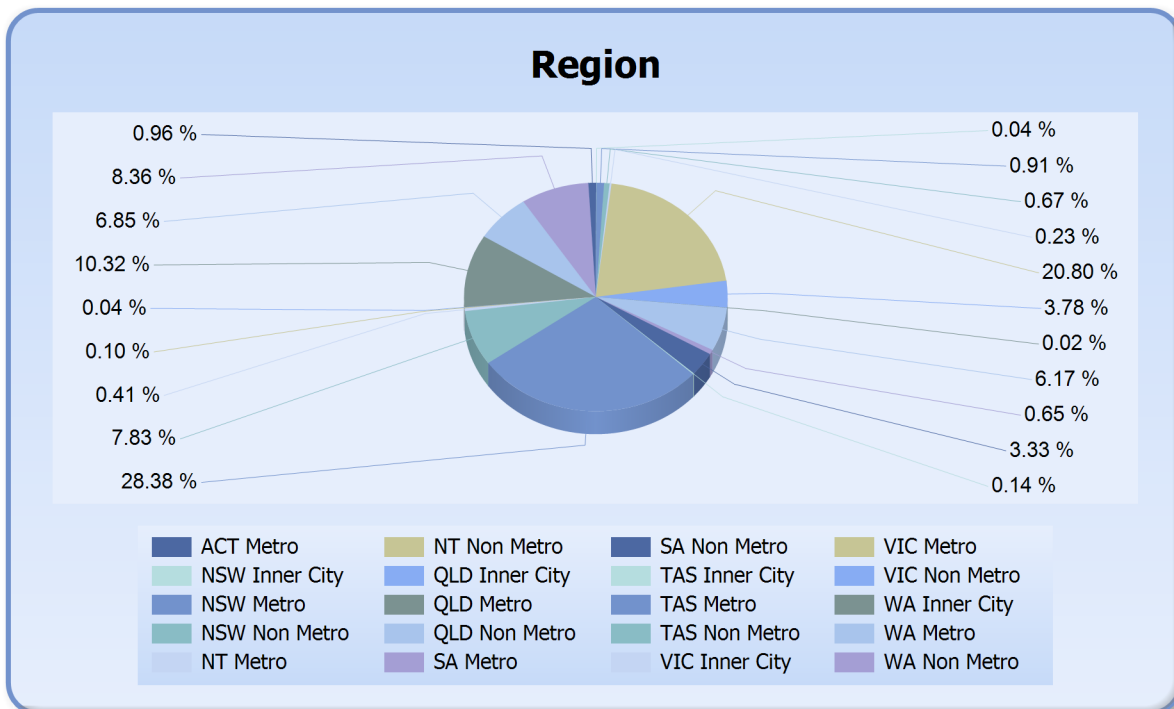
Repayment Type	Current Balance	Current Balance %
Interest Only	\$7,539,887.55	1.31%
Principal & Interest	\$566,174,227.85	98.69%
<b>Total</b>	<b>\$573,714,115.40</b>	<b>100.00%</b>



# IDOL Trust 2011-1

## General Collateral Report

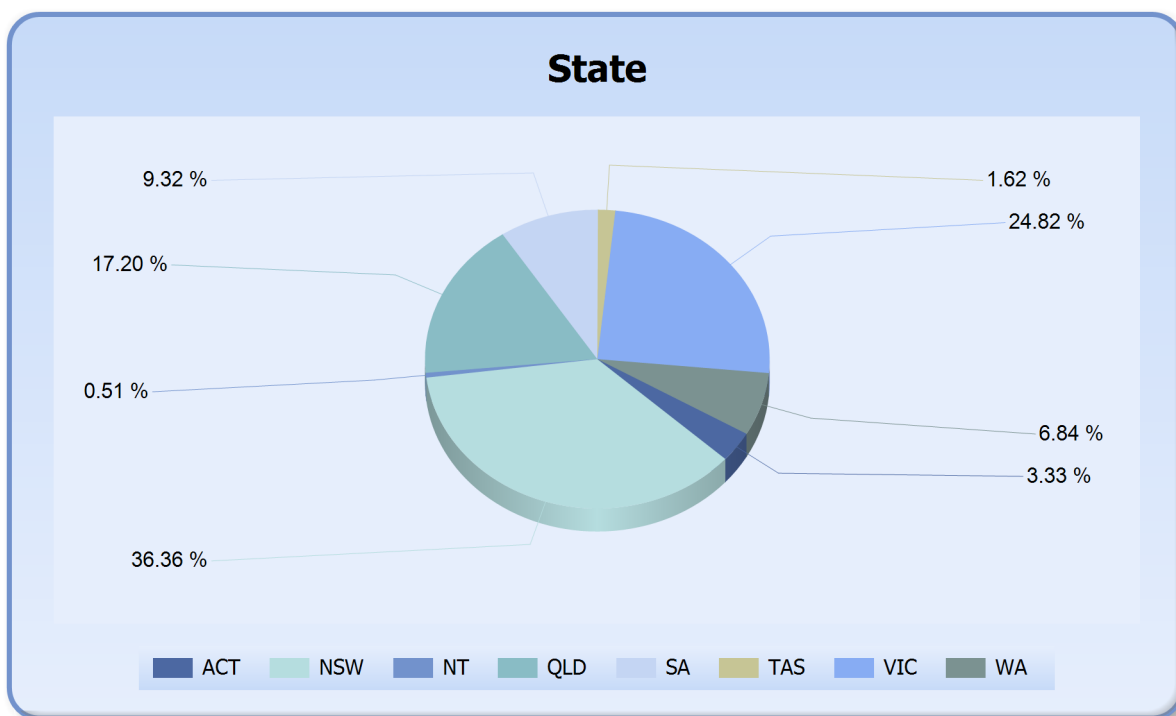
Region	Current Balance	Current Balance %
ACT Metro	\$19,101,741.28	3.33%
NSW Inner City	\$814,999.05	0.14%
NSW Metro	\$162,830,642.57	28.38%
NSW Non Metro	\$44,946,152.87	7.83%
NT Metro	\$2,338,974.55	0.41%
NT Non Metro	\$593,169.85	0.10%
QLD Inner City	\$215,479.25	0.04%
QLD Metro	\$59,184,715.83	10.32%
QLD Non Metro	\$39,287,795.31	6.85%
SA Metro	\$47,978,421.11	8.36%
SA Non Metro	\$5,512,532.68	0.96%
TAS Inner City	\$231,262.77	0.04%
TAS Metro	\$5,199,532.62	0.91%
TAS Non Metro	\$3,860,138.98	0.67%
VIC Inner City	\$1,326,067.09	0.23%
VIC Metro	\$119,360,334.08	20.80%
VIC Non Metro	\$21,684,327.63	3.78%
WA Inner City	\$102,836.33	0.02%
WA Metro	\$35,421,643.84	6.17%
WA Non Metro	\$3,723,347.71	0.65%
<b>Total</b>	<b>\$573,714,115.40</b>	<b>100.00%</b>



# IDOL Trust 2011-1

## General Collateral Report

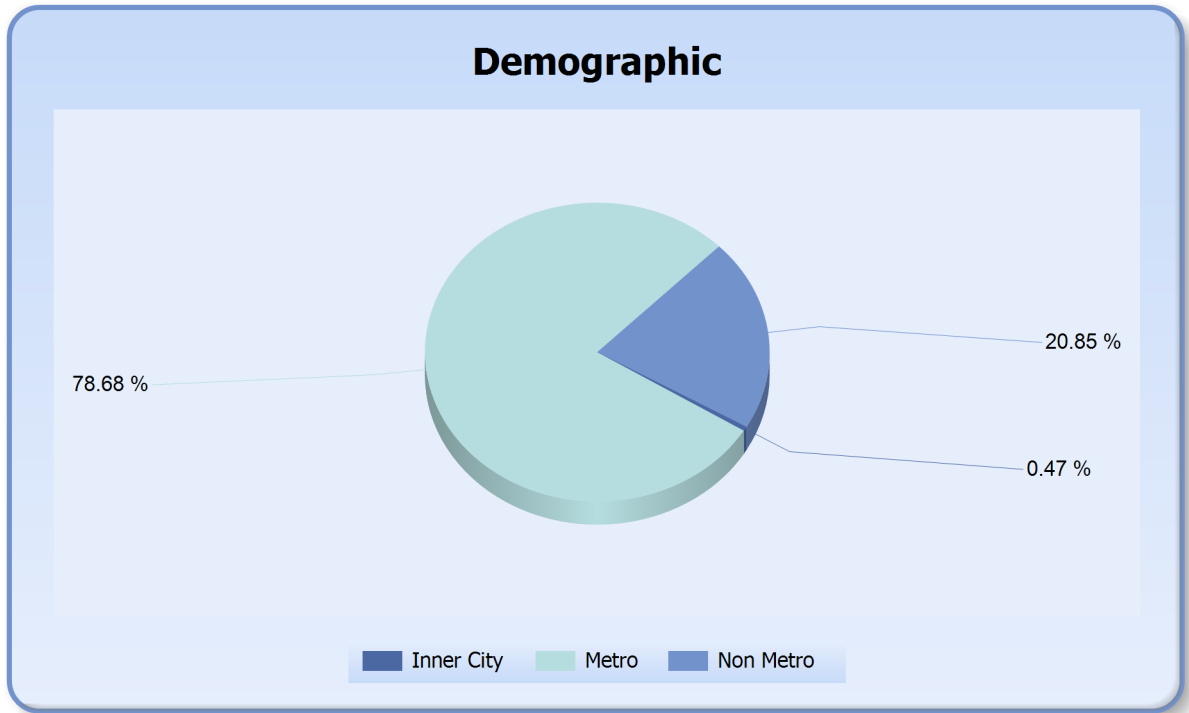
State	Current Balance	Current Balance %
ACT	\$19,101,741.28	3.33%
NSW	\$208,591,794.49	36.36%
NT	\$2,932,144.40	0.51%
QLD	\$98,687,990.39	17.20%
SA	\$53,490,953.79	9.32%
TAS	\$9,290,934.37	1.62%
VIC	\$142,370,728.80	24.82%
WA	\$39,247,827.88	6.84%
<b>Total</b>	<b>\$573,714,115.40</b>	<b>100.00%</b>



# IDOL Trust 2011-1

## General Collateral Report

Demographic	Current Balance	Current Balance %
Inner City	\$2,690,644.49	0.47%
Metro	\$451,416,005.88	78.68%
Non Metro	\$119,607,465.03	20.85%
<b>Total</b>	<b>\$573,714,115.40</b>	<b>100.00%</b>



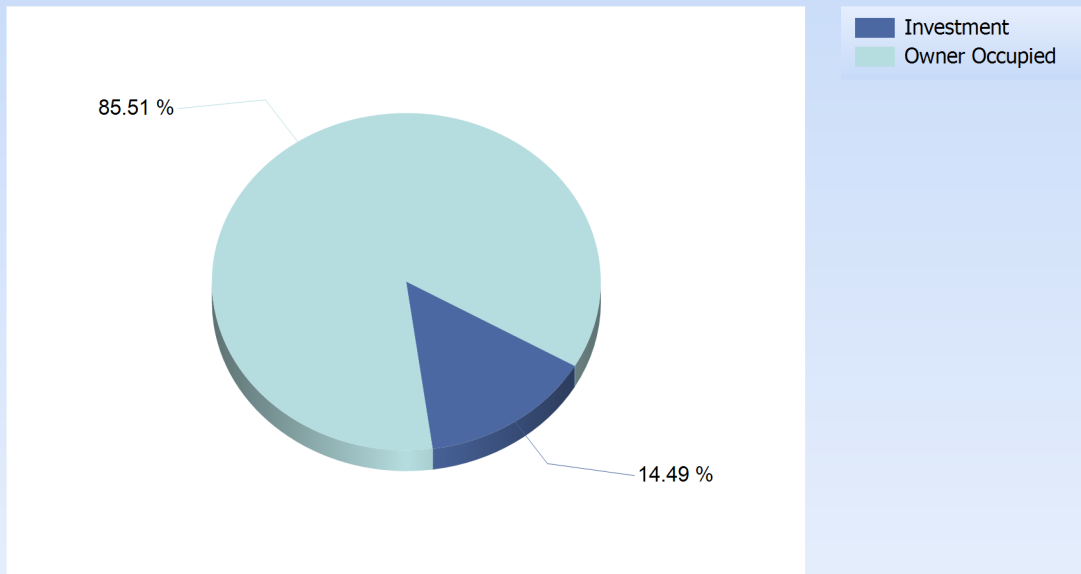


# IDOL Trust 2011-1

## General Collateral Report

Occupancy Type	Current Balance	Current Balance %
Investment	\$83,112,450.24	14.49%
Owner Occupied	\$490,601,665.16	85.51%
<b>Total</b>	<b>\$573,714,115.40</b>	<b>100.00%</b>

### Occupancy



# IDOL Trust 2011-1

## General Collateral Report

Document Type	Current Balance	Current Balance %
Full Doc	\$573,714,115.40	100%
<b>Total</b>	<b>\$573,714,115.40</b>	<b>100%</b>

